



**United
Scientific**

**Porcelainware
2020**



www.unitedsci.com

P: +1 847 336-7556



Porcelainware Crucibles



Crucibles, Tall Form with Cover, Porcelain

Tall form crucibles include covers. Crucibles are glazed on inner and outer surfaces except for the outside bottom and rim.

Autoclavable. Withstand temperatures to 1150°C. To prevent thermal stress cracks, we strongly recommend a heating/cooling rate not exceeding 200°C per hour. United porcelain crucibles offer excellent resistance to acids and alkalis except for hydrofluoric acid.

| Item No. | Capacity (ml) | Height (mm) | Top Outside Diameter (mm) | Quantity per pack |
|----------|---------------|-------------|---------------------------|-------------------|
| JCT013 | 1.3 | 15 | 15 | 6 |
| JCT005 | 5 | 20 | 24 | 6 |
| JCT010 | 10 | 26 | 31 | 6 |
| JCT015 | 15 | 29 | 35 | 6 |
| JCT025 | 25 | 32 | 40 | 6 |
| JCT030 | 30 | 37 | 43 | 6 |
| JCT040 | 40 | 40 | 50 | 6 |
| JCT050 | 50 | 43 | 53 | 6 |
| JCT100 | 100 | 54 | 65 | 6 |
| JCT250 | 250 | 72 | 88 | 6 |

Crucibles, Wide Form with Cover, Porcelain

Wide form crucibles include covers. Crucibles are glazed on inner and outer surfaces except for the outside bottom and rim.

Autoclavable. Withstand temperatures to 1150°C. To prevent thermal stress cracks, we strongly recommend a heating/cooling rate not exceeding 200°C per hour. United porcelain crucibles offer excellent resistance to acids and alkalis except for hydrofluoric acid.

| Item No. | Capacity (ml) | Height (mm) | Top Outside Diameter (mm) | Quantity per pack |
|----------|---------------|-------------|---------------------------|-------------------|
| JCL010 | 10 | 20 | 32 | 6 |
| JCL020 | 20 | 26 | 41 | 6 |
| JCL030 | 30 | 31 | 50 | 6 |
| JCL050 | 50 | 37 | 61 | 6 |
| JCL100 | 100 | 46 | 76 | 6 |
| JCL150 | 150 | 52 | 84 | 6 |
| JCL250 | 250 | 60 | 102 | 6 |



Crucibles, Gooch Filter with Cover, Porcelain

Gooch crucibles have a perforated bottom and include covers. Crucibles are glazed on inner and outer surfaces except for the outside bottom and rim. Used for determination of total suspended solids.

Autoclavable. Withstand temperatures to 1150°C. To prevent thermal stress cracks, we strongly recommend a heating/cooling rate not exceeding 200°C per hour. United porcelain crucibles offer excellent resistance to acids and alkalis except for hydrofluoric acid.

| Item No. | Capacity (ml) | For Filter Paper Dia. (mm) | Height x Top O.D. (mm) | Quantity per pack |
|----------|---------------|----------------------------|------------------------|-------------------|
| JGC015 | 15 | 15 - 16 | 32 x 29 | 6 |
| JGC030 | 30 | 20 - 21 | 45 x 36 | 6 |
| JGC050 | 50 | 23 - 24 | 49 x 40 | 6 |
| JGC140 | 140 | 30 | 83 x 55 | 1 |



Crucibles include a molded-in porous disc with stable porosity and consistent flow rate.

Crucibles, Porous Bottom, Porcelain

Crucibles with porous bottom have a molded-in porous disc with stable porosity and consistent flow rate. Available with very fine (1.2 µm), fine (5 µm), and medium (15 µm) pore diameters. Glazed inside and out, except for outside bottom and rim. Autoclavable.

| Item No. | Capacity (ml) | Pore Diameter (micron / µm) | Top O.D. x Bottom O.D. (mm) | Qty per pack |
|----------|---------------|-----------------------------|-----------------------------|--------------|
| JCP25012 | 25 | 1.2 | 36 X 24 | 8 |
| JCP25050 | 25 | 5.0 | 36 X 24 | 8 |
| JCP25150 | 25 | 15.0 | 36 X 24 | 8 |



Casseroles, Porcelain

With lip and flat porcelain handle. Glazed on inner and outer surfaces except for rim and top of handle. Autoclavable. Withstand temperatures to 1150°C. To prevent thermal stress cracks, we strongly recommend a heating/cooling rate not exceeding 200°C per hour. Excellent resistance to acids and alkalis except for hydrofluoric acid.

| Item No. | Capacity (ml) | Height (mm) | Top Outside Diameter (mm) | Quantity per pack |
|----------|---------------|-------------|---------------------------|-------------------|
| JPC020 | 20 | 22 | 40 | 1 |
| JPC060 | 60 | 33 | 70 | 1 |
| JPC140 | 140 | 42 | 85 | 1 |
| JPC200 | 200 | 52 | 100 | 1 |
| JPC500 | 500 | 75 | 125 | 1 |
| JPC750 | 750 | 88 | 150 | 1 |
| JPC1200 | 1200 | 98 | 175 | 1 |



Porcelain Casseroles, Economy

With lip and porcelain handle. Casseroles are glazed inside and out.

| Item No. | Capacity (ml) | Height (mm) | Top Outside Diameter (mm) | Quantity per pack |
|----------|---------------|-------------|---------------------------|-------------------|
| PCS050 | 30 | 25 | 50 | 1 |
| PCS070 | 80 | 35 | 70 | 1 |
| PCS090 | 175 | 45 | 90 | 1 |
| PCS100 | 220 | 50 | 100 | 1 |



Porcelain Evaporating Dishes, Economy

These glazed evaporating dishes can withstand temperatures up to 1050°C. Each dish is individually packed.

| Item No. | Capacity (ml) | Top Outside Diameter (mm) | Quantity per pack |
|----------|---------------|---------------------------|-------------------|
| PED035 | 35 | 60 | 1 |
| PED050 | 50 | 70 | 1 |
| PED075 | 75 | 82 | 1 |
| PED100 | 100 | 90 | 1 |
| PED125 | 125 | 98 | 1 |

Evaporating Dishes, Round Form, Porcelain

Round form evaporating dishes include lip. Dishes from 35ml to 250ml capacity are glazed inside and outside. Dishes 385ml and larger are glazed inside and partially outside. Autoclavable. Withstand temperatures to 1150°C. To prevent thermal stress cracks, we strongly recommend a heating/cooling rate not exceeding 200°C per hour. Excellent resistance to acids and alkalis except for hydrofluoric acid.

| Item No. | Capacity (ml) | Top Outside Diameter (mm) | Quantity per pack |
|----------|---------------|---------------------------|-------------------|
| JED035 | 35 | 60 | 6 |
| JED070 | 70 | 75 | 6 |
| JED080 | 80 | 80 | 6 |
| JED120 | 120 | 94 | 6 |
| JED150 | 150 | 100 | 6 |
| JED250 | 250 | 115 | 6 |
| JED385 | 385 | 145 | 1 |
| JED525 | 525 | 162 | 1 |
| JED765 | 765 | 185 | 1 |
| JED1285 | 1285 | 215 | 1 |
| JED2100 | 2100 | 265 | 1 |
| JED3250 | 3250 | 305 | 1 |



Evaporating Dishes, Flat Form, Porcelain

Shallow form with lip and flat bottom. Glazed except for rim and part of outside bottom. Autoclavable. Withstand temperatures to 1150°C. To prevent thermal stress cracks, we strongly recommend a heating/cooling rate not exceeding 200°C per hour. Excellent resistance to acids and alkalis except for hydrofluoric acid.

| Item No. | Capacity (ml) | Top Outside Diameter (mm) | Quantity per pack |
|----------|---------------|---------------------------|-------------------|
| JEF035 | 35 | 65 | 6 |
| JEF050 | 50 | 75 | 6 |
| JEF080 | 80 | 85 | 6 |
| JEF100 | 100 | 100 | 6 |
| JEF200 | 200 | 120 | 6 |
| JEF300 | 300 | 150 | 6 |



Combustion Boats, Porcelain

Glazed on inner and outer surfaces except for outside bottom surface.

| Item No. | Capacity (ml) | L x W x H (mm) | Quantity per pack |
|----------|---------------|----------------|-------------------|
| JCB017 | 0.1 | 17 x 6 x 4 | 1 |
| JCB060 | 2.0 | 60 x 10 x 8 | 1 |
| JCB097 | 7.0 | 97 x 16 x 10 | 1 |
| JCB100 | 12.0 | 100 x 20 x 13 | 1 |

NEW PRODUCT

Streak Plates, White

These unglazed white porcelain streak plates are 1" x 2" in size and are for use in hardness testing of rocks and minerals.

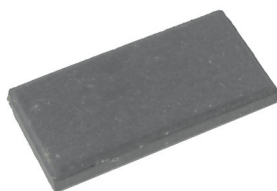


| Item No. | Description |
|----------------|----------------------------------|
| PSP001-W-PK/10 | Streak Plates, White, pack of 10 |
| PSP001-W | Streak Plates, White, pack of 12 |

NEW PRODUCT

Streak Plates, Black

These unglazed black streak plates are 1" x 2" in size and are for use in hardness testing of rocks and minerals.



| Item No. | Description |
|----------------|----------------------------------|
| PSP001-B-PK/10 | Streak Plates, Black, pack of 10 |
| PSP001-B | Streak Plates, Black, pack of 12 |

Streak Plate, Porcelain

Porcelain streak plate, unglazed, for use in hardness testing of rocks and minerals.



| Item No. | Length | Width | Thickness | Quantity per pack |
|----------|--------|-------|-----------|-------------------|
| JSP001 | 2.5" | 2" | 1/8" | 1 |



Desiccator Plates with Small Holes, Porcelain

Plates include numerous 5mm diameter perforations. Also includes large hole in center. Glazed on one side.

| Item No. | Diameter (mm) | Diameter of Holes (mm) | Diameter of Center Hole (mm) | Quantity per pack |
|----------|---------------|------------------------|------------------------------|-------------------|
| JSD140 | 140 | 5 | 25 | 1 |
| JSD190 | 190 | 5 | 25 | 1 |
| JSD230 | 230 | 5 | 25 | 1 |



Desiccator Plates with Stand, Porcelain

Desiccators include three 16mm high feet. Glazed on top surface.

| Item No. | Diameter (mm) | Number of Holes | Diameter of Holes (mm) | Quantity per pack |
|----------|---------------|-----------------|------------------------|-------------------|
| JDS095 | 95 | 3 | 30 | 1 |
| JDS115 | 115 | 4 | 30 | 1 |
| JDS142 | 142 | 5 | 30 | 1 |
| JDS146 | 146 | 7 | 30 | 1 |
| JDS190 | 190 | 7 | 30 | 1 |
| JDS230 | 230 | 8 | 30 | 1 |



Desiccator Plates with Large Holes, Porcelain

Includes large hole in center and additional 6 to 10 holes depending on plate size. Glazed on one side.

| Item No. | Dia. (mm) | Number of Holes | Dia. of Holes (mm) | Dia. of Center Hole (mm) | Quantity per pack |
|----------|-----------|-----------------|--------------------|--------------------------|-------------------|
| JDP140 | 140 | 6 | 35 | 35 | 1 |
| JDP190 | 190 | 8 | 35 | 50 | 1 |
| JDP230 | 230 | 10 | 35 | 50 | 1 |



Porcelainware Funnels



Scan to view demonstration video

Buchner Funnels, Porcelain, Economy

Good quality glazed porcelain. Acid and alkali resistant.

| Item No. | Approx. Capacity (ml) | Top Dia. x Height (mm) | For Filter Paper Size (cm) | Quantity per pack |
|----------|-----------------------|------------------------|----------------------------|-------------------|
| PBF050 | 50 | 50 x 90 | 4 | 1 |
| PBF070 | 120 | 70 x 125 | 5.5 | 1 |
| PBF090 | 200 | 90 x 155 | 7 | 1 |
| PBF110 | 400 | 110 x 165 | 11 | 1 |
| PBF150 | 650 | 150 x 220 | 12.5 | 1 |
| PBF200 | 900 | 200 x 250 | 18 | 1 |
| PBF250 | 1200 | 250 x 280 | 24 | 1 |

Buchner Funnels, Porcelain

Porcelain Buchner funnels include fixed perforated plates. Funnels are glazed on inner and outer surfaces except for the rims.

| Item No. | Approx. Capacity (ml) | Top Dia. x Height (mm) | For Filter Paper Size (cm) | Quantity per pack |
|----------|-----------------------|------------------------|----------------------------|-------------------|
| JBF003 | 3 | 20 x 66 | 1.3 | 1 |
| JBF035 | 35 | 50 x 91 | 4 | 1 |
| JBF100 | 100 | 65 x 103 | 5.5 | 1 |
| JBF200 | 200 | 86 x 140 | 7 | 1 |
| JBF350 | 350 | 105 x 162 | 9 | 1 |
| JBF600 | 600 | 127 x 194 | 11 | 1 |
| JBF800 | 800 | 143 x 200 | 12.5 | 1 |
| JBF1150 | 1150 | 172 x 220 | 15 | 1 |
| JBF2000 | 2000 | 210 x 272 | 18 | 1 |
| JBF4800 | 4800 | 270 x 352 | 24 | 1 |



Hirsch Funnels, Porcelain

Porcelain funnels feature fixed perforated plates. Glazed on inner and outer surfaces except for the rim.

| Item No. | Approx. Capacity (ml) | Top Dia. x Height (mm) | For Filter Paper Dia. (mm) | Quantity per pack |
|----------|-----------------------|------------------------|----------------------------|-------------------|
| JHF010 | 10 | 30 x 50 | 10 | 1 |
| JHF012 | 12 | 40 x 70 | 15 | 1 |
| JHF025 | 25 | 50 x 75 | 30 | 1 |
| JHF050 | 50 | 75 x 130 | 47 | 1 |
| JHF140 | 140 | 100 x 175 | 55 | 1 |



NEW PRODUCT

Buchner Funnel, Table Type

These autoclavable, table type Buchner funnels are ideal for vacuum filtration. Includes a tubulated side outlet and accepts standard filters.

| Item No. | Capacity (ml) | Height x Diameter (mm) | Filter Paper Size | Side Outlet O.D. |
|-----------|---------------|------------------------|-------------------|------------------|
| JTTBF750 | 750 | 60 x 147 | 125mm | 5/8" / 16mm |
| JTTBF1900 | 1900 | 122 x 215 | 180mm | 1" / 25mm |



Porcelainware Starter Kit

A customized kit that includes our top-selling porcelain products. Starter kit includes the following:

Contents:

- Crucible, Porcelain, Low Form, 50ml capacity (JCL050)1
- Crucible, Porcelain, High Form, 50ml capacity (JCT050)1
- Casserole, Porcelain, 200ml capacity (JPC200)1
- Mortar and Pestle, 275ml capacity (JMD275)1
- Evaporating Dish, 80ml capacity (JED080)1
- Clay Pipe Triangle, 2" (CPT020)1
- Crucible Tongs, Nickel Plated, Steel, 9" (CTSP09)1



| Item No. | Description |
|----------|---------------------------|
| PORTKIT2 | Porcelainware Starter Kit |



Mortar and Pestle Sets, Deep Form, Porcelain

Deep form mortars with lips are glazed on the outside (except for the bottom) and unglazed inside. Oversized pestles are glazed to grinding surface.

| Item No. | Capacity (ml) | Mortar Height (mm) | Pestle Length (mm) | Quantity per pack |
|----------|---------------|--------------------|--------------------|-------------------|
| JMD050 | 50 | 47 | 95 | 1 |
| JMD070 | 70 | 52 | 115 | 1 |
| JMD150 | 150 | 70 | 135 | 1 |
| JMD275 | 275 | 70 | 160 | 1 |
| JMD400 | 400 | 80 | 185 | 1 |
| JMD750 | 750 | 110 | 200 | 1 |
| JMD1900 | 1900 | 130 | 222 | 1 |



Mortar and Pestle Sets, Porcelain, Economy

Mortars have pouring spout, are glazed outside only, with porcelain pestles glazed to grinding surface.

| Item No. | Capacity (ml) | Mortar I.D. (mm) | Pestle Length (mm) | Quantity per pack |
|----------|---------------|------------------|--------------------|-------------------|
| PPM060 | 80 | 60 | 95 | 1 |
| PPM075 | 125 | 75 | 115 | 1 |
| PPM100 | 300 | 100 | 135 | 1 |
| PPM125 | 500 | 125 | 165 | 1 |



Porcelainware Spatulas / Stands



Spatula, Porcelain

Glazed porcelain spatula, with one long flat end, features a knob on the other end for easy grip. Measures 8" (20cm) long.

| Item No. | Description | Quantity per pack |
|----------|--------------------|-------------------|
| JST001 | Spatula, Porcelain | 1 |



Spatulas with Spoons, Porcelain

Glazed porcelain spatula with one flat end and one spoon end.

| Item No. | Length (mm) | Capacity (ml) | Quantity per pack |
|----------|-------------|---------------|-------------------|
| JSS001 | 100 | 0.1 | 1 |
| JSS003 | 125 | 0.3 | 1 |
| JSS005 | 165 | 0.5 | 1 |
| JSS010 | 198 | 1.2 | 1 |
| JSS060 | 260 | 5.5 | 1 |



Spot Plates, Porcelain

Color-reaction or spot plates, glazed except for bottom surface.

| Item No. | Number of Wells | Length (mm) | Width (mm) | Quantity per pack |
|----------|-----------------|-------------|------------|-------------------|
| JSC003 | 3 | 90 | 29 | 1 |
| JSC006 | 6 | 94 | 62 | 1 |
| JSC012 | 12 | 115 | 88 | 1 |
| JSC030 | 30 | 177 | 137 | 1 |



SSP6X6



SSP7X13

Support Stands with Rods, Porcelain

Heavy porcelain bases with glazed finish to prevent chemicals from seeping into the base. Base includes rubber feet to ensure the base does not slide or damage bench surface. Hole for rod is located in the center of the base. Includes a removable aluminum support rod. Stainless steel support rod is available separately.

| Item No. | Base Size | Rod Length | Rod Diameter |
|----------|-----------|------------|--------------|
| SSP6X6 | 6" x 6" | 20" | 3/8" |
| SSP7X13 | 7" x 13" | 24" | 1/2" |



www.unitedsci.com

United Scientific Supplies, Inc.

3055 N. Oak Grove Ave. P: +1 847-336-7556
Waukegan IL 60087 F: +1 847-336-7571
www.unitedsci.com E: info@unitedsci.com