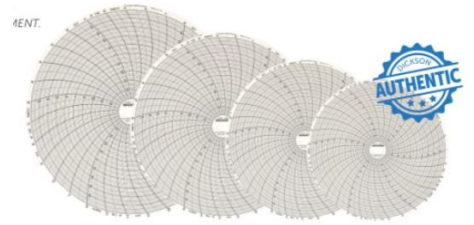


CHARTS

AUTHENTIC DICKSON CHARTS AND PENS ARE REQUIRED TO ACHIEVE STATED ACCURACY. NOT INCLUDED WITH INSTRUMENT.



3" (76MM) CHARTS

FOR MODEL	RANGE	24 HR CHART	7 DAY CHART	QTY
SC367	-14° TO 32°F	C301	C302	60
	-25° TO 0°C	C309	C310	60
SC377	4° TO 50°F	C303	C304	60
	-15° TO 10°C	C311	C312	60
SC386	-5° TO 20°C	C317	C318	60
	22° TO 68°F	C319	C320	60
SC387	50° TO 96°F	C305	C306	60
	10° TO 35°C	C313	C314	60
SC397	76° TO 122°F	C307	C308	60
	25° TO 50°C	C315	C316	60

4" (101MM) CHARTS

FOR MODEL	RANGE	24 HR CHART	7 DAY CHART	QTY
SL4100	0° TO 100°F	C010	C012	60
	-18° TO 37°C	C209	C210	60
SL4350	-30° TO 50°C	C180	C181	60
	-22° TO 122°F	C205	C206	60
PW470	0 TO 100 PSI	C010	C012	60
PW474	0 TO 200 PSI	C026	C040	60
PW476	0 TO 300 PSI	C022	C036	60
PW479	0 TO 500 PSI	C028	C056	60

6" (152MM) CHARTS

FOR MODEL	RANGE	24 HR CHART	7 DAY CHART	QTY
KT6P1 KT6P2 KT6P5	-50° TO 50°F/C	C652	C651	60
	0° TO 50° OR -50° TO 0°F/C	C654	C653	60
	0° TO 100° F/C	C658	C657	60
	-100° TO 0° F/C	C658	C657	60
	0° TO 250°F/C	C660	C659	60
	0° TO 500°F	C662	C661	60
	50° TO 100°F/C	C656	C655	60
TH6P1 TH6P2	0° TO 100°F	C658	C657	60
	0° TO 50°C	C664	C663	60
TH6P3	0° TO 100°F	C658	C657	60
	0° TO 50°C	C664	C663	60
	0° TO 200°F	-	C665	60
	0° TO 200°F	C667	-	60

8" (203MM)

FOR MODEL	RANGE	24 HR CHART	7 DAY CHART	QTY	
KTBP0 KTB-30	0° TO 100°F/C	C410	C412	60	
	-20° TO 20°F/C	C445	C448	60	
	-50° TO 50°F/C	C411	C414	60	
	0° TO 150°F/C	C425	C435	60	
	0° TO 250°F/C	C432	C439	60	
	0° TO 500°F/C	C428	C459	60	
	0° TO 1000°F/C	C441	C440	60	
KTBP2 KTB-30	0° TO 2000°F	C443	C444	60	
	-20° TO 20°F/C	C445	C448	60	
	-50° TO 50°F/C	C411	C414	60	
	0° TO 100°F/C	C410	C412	60	
	0° TO 150°F/C	C425	C435	60	
	0° TO 250°F/C	C432	C439	60	
	0° TO 500°F/C	C428	C459	60	
KTBP3 KT856 KTB-20 KT8-21 KT8-30 KT8-31R KT8-40 KT8-50	0° TO 1000°F/C	C441	C440	60	
	0° TO 2000°F	C443	C444	60	
	-20° TO 20°F/C	C445	C448	60	
	-50° TO 50°F/C	C411	C414	60	
	0° TO 100°F/C	C410	C412	60	
	0° TO 150°F/C	C425	C435	60	
	0° TO 250°F/C	C432	C439	60	
KT8-20 KT8-21 KT8-30 KT8-30R KT8-31R KT8-40	0° TO 500°F/C	C428	C459	60	
	0° TO 1000°F/C	C441	C440	60	
	0° TO 2000°F	C443	C444	60	
	-100° TO 0°F/C	C497	C499	60	
	TH8P0 TH8-10	-20°F TO 120°F	C415	C417	60
		-20°C TO 50°C	C472	C473	60
	TH8P2 TH8-10	-20°F TO 120°F	C415	C417	60
-20°C TO 50°C		C472	C473	60	
40°F TO 110°F		C476	C477	60	
5°C TO 40°C		C478	C479	60	
TH8P3 TH8P5 TH8-11 TH8-12	-20°F TO 120°F	C415	C417	60	
	-20°C TO 50°C	C472	C473	60	
	0° TO 200°F	-	C437	60	
	0° TO 200° OR 0° TO 185°F	C458	-	60	
	40°F TO 110°F	C476	C477	60	
	5°C TO 40°C	C478	C479	60	
PW860	0 TO 100 PSI	-	C412	60	
PW861	0 TO 100 PSI	C410	-	60	
PW864	0 TO 200 PSI	-	C436	60	
PW865	0 TO 200 PSI	C456	-	60	
PW866	0 TO 300 PSI	-	C431	60	
PW867	0 TO 300 PSI	C422	-	60	
PW875	0 TO 1000 PSI	C441	-	60	